

Preschool

1

Areas



ARTISTIC
EDUCATION



KNOWLEDGE OF THE
NATURAL AND SOCIAL
ENVIRONMENT



SOCIAL
AND CIVIC
VALUES

We give packaging a new life

Goals, opportunities, ideas and concepts

1. Raise awareness in children about caring for the environment with simple daily habits such as watching the amount of water they consume and separating waste for recycling.
2. Include the environment in songs, poems or maths problems, dealing with the topic of waste while talking about how the city works.
3. See packaging as waste that they can turn into useful and artistic objects and know that, in the end, they will become new materials if they are put in the right container.



Preschool

1

Activity 1

build with packaging

We give packaging a new life

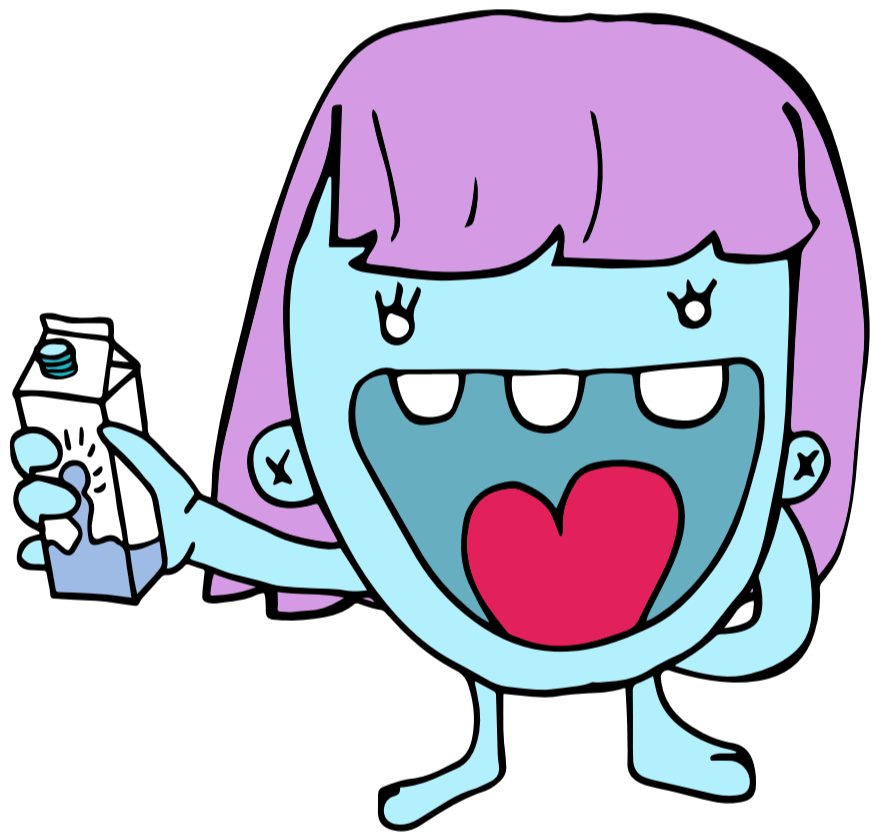
● The aim of this activity is...

Handle packaging safely, discovering volume, size, weight and materials. Become familiar with what packaging is.

● What do we need?

Packaging of all types that the children can handle.

Adhesive tape, paper clips and elastic bands to hold them together.



● What will we do?

See that we can build well using packaging. We will play with the packaging with the pupils, distributed by tables. We will build towers, looking for balance, as high as possible and really pretty.

Shall we continue?

We could build a large sculpture from packaging of all kinds, with different classes or different years working together... and display it in the school foyer.

We give packaging a new life

● The aim of this activity is...

Give a real shape to collaborative construction. Learn more about our cities. Give free reign to creativity based on recycling, seeing that something that seemed to have no use now has a new life.

● What do we need?

A base for the model of the city: either a table, several tables or a board. Strips of card or gaffer tape for the streets. Packaging of all types and sizes (plastic, cans, Brik cartons and cardboard tube, but no glass packaging) and coloured paper, paint and glue to decorate.

● What will we do?

A model of the city with buildings, houses, parks, etc., all made from packaging. Each pupil will decide what they want to do, from the school to the fire station, shops or housing. Don't forget to put in the coloured containers!



Shall we continue?

A rubbish collection to get packaging that can be used for the activity. This can be in the playground after break, at a party or from a nearby park. After the rubbish has been collected, the packaging can be selected using gloves for safety.

This will allow us to explain to the pupils what littering is and the importance of keeping natural and urban spaces clean.