



Ecoembes

MEMBERSHIP GUIDE

The power of collaboration:

together, we can help minimise the impact of packaging waste on the environment to give it a second life and shift towards a circular economy.



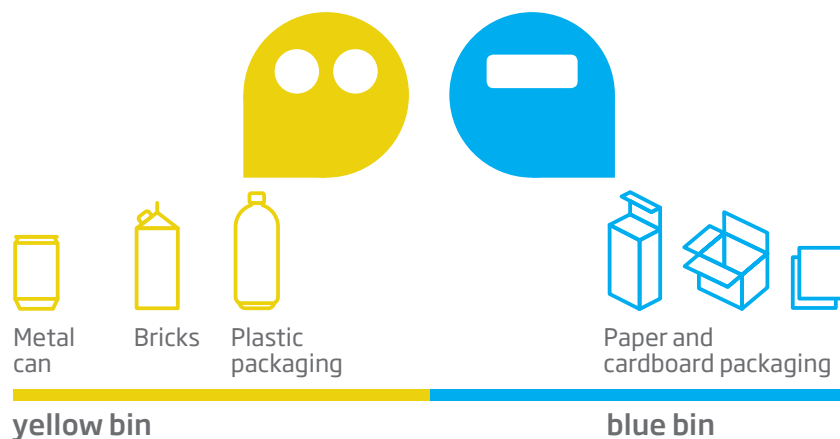
What is Ecoembes?

We are a **Collective Extended Producer Responsibility System (SCRAP in Spanish)** that manages the recycling of household packaging waste that is deposited in the yellow and blue containers in Spain.

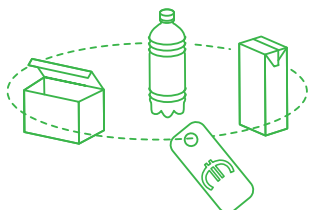
We were created in 1996 to address the obligations arising from Law 11/97 on packaging. This law required companies to recycle the waste from the packaging they place on the market. We are currently governed by **RD 1055/2022 on Packaging and Packaging Waste**, approved on 27 December 2022.

Packaging companies, shops, distributors, and packaging manufacturers created Ecoembes as a **collective and efficient solution** to satisfy this responsibility and ensure the achievement of the targets set by the EU, thus furthering the transition towards a **Circular Economy**.

Through the **eco-design and recycling** of packaging, we make it possible for plastic packaging, metal packaging and cartons (yellow container) and paper and cardboard packaging (blue container) to become more sustainable and have a second life.



Your company is affected by the Packaging and Packaging Waste RD if it...



Markets

products packaged under its own brand or for distribution that are likely to reach the final consumer in Spain.



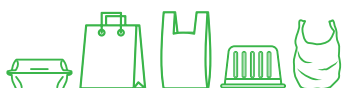
Packages/manufactures

products likely to reach the final consumer in Spain.



Imports/Acquires within the EU

packaged products likely to reach the final consumer in Spain from foreign companies that have not appointed an authorised representative in Spain.



Is a business and supplies

service packaging* (such as bags, wrappers, punnets, etc.) that is supplied at the point of sale.



Market online


your product to the end consumer (both the product packaging and the shipping packaging).

Marketplaces that facilitate marketing to companies that are not in compliance with the applicable laws will have a subsidiary liability.

Courier and parcel companies that provide shipping packaging.

*According to Article 28.1 of RD 1055/22, the option exists to sign voluntary agreements with suppliers to delegate to them compliance with legal and financial obligations.

In order to comply with the RD on packaging and packaging waste through Ecoembes, the following processes must be carried out:

- 1 **Complete the Membership Application** in the Member Companies section of our website: www.ecoembes.com  Click here
- 2 You will then receive your **Membership Contract** through the electronic signature platform for your signature.
- 3 Companies will have to submit **a declaration** for the packaging they plan to put on the market in the current year.
- 4 Once the declaration is submitted, the declared amount will be invoiced over **four quarters**.

Once it joins, the company will submit **each year (before 28 February) a Declaration** for the final packaging that it placed on the Spanish market during the previous period. Additionally, with this membership certificate, it can register in and report information to the Register of Producers.

Membership certificate

This document confirms that the company is a member and up to date with its contractual obligations.

After it joins, the company can request the certificate at any time through the Companies Portal.



Declaration

The declaration includes a calculation of the economic payment to be made to the Collective Extended Producer Responsibility System (SCRAP) for the packaged products marketed by the member company over the last calendar year. Companies must provide **detailed information** on their products, packaging and annual sales.

Companies must report and pay into the system for all household packaging they place on the national market. Household packaging is any packaging of products intended for use or consumption by individuals, regardless of their primary, secondary or tertiary nature, provided that this **packaging is likely to be purchased by the consumer in shops**, regardless of the place of sale or consumption. In addition, companies may voluntarily report any commercial and industrial packaging they place on the national market.

Information required:

- Sector for product packaging _____
- Type of packaging _____
- Material _____
- Weight (g) _____
- Sales (units) _____
- Colour (for plastic and glass materials) _____
- % recycled material _____

Check the **current rates** for the different materials and learn more about the calculation procedure in the Business Portal available on our website, www.ecoembes.com/empresas, by logging in through Registered Users.

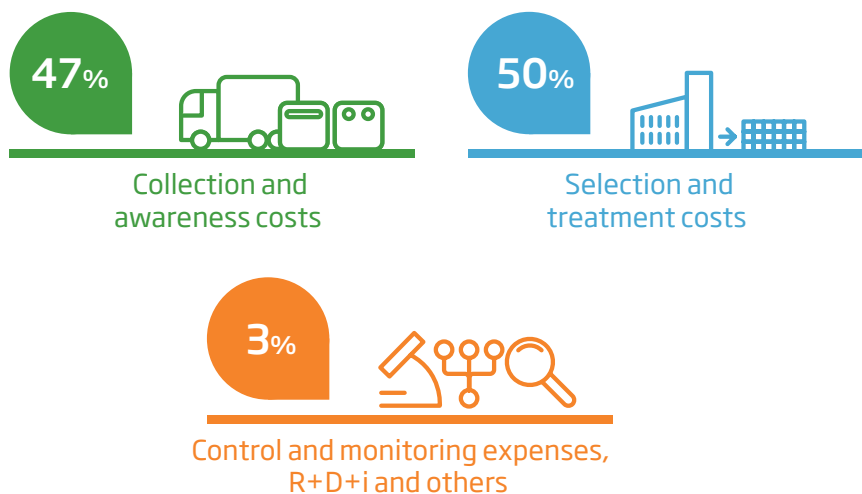
The cost of processing each packaging material is different, so each of them has a certain rate that takes into account its specific characteristics and costs. In addition, the rate is modulated based on whether the design of the packaging helps or hinders the sorting and/or recycling process, or if it incorporates recycled material.

No public agency is involved in setting the rates, only agents in the packaging value chain who are represented in the various Ecoembes bodies and working groups.

How the model is financed

Costs borne by the System

Ecoembes uses the **fees paid by its member companies** to pay for the cost that the separate collection of packaging entails for Local Entities. To this end, it enters into **agreements** to ensure that the packaging is recovered in the most **efficient** way at the **lowest** economic, social and environmental cost, promoting innovation and bringing recycling closer to the public through **awareness campaigns**.



2022 data

Ecoembes is a non-profit entity, so the costs of the household packaging recycling process determine the income of the System. The member companies provide, through the fees, the funds needed to cover the costs presented in the previous section. The amount paid in is reduced by the income obtained from the sale of materials.



www.ecoembes.com/empresas

Contact Information

Customer Service

900 84 83 82

atencionalcliente@ecoembes.com



FR-0189/2003



GA-2004/0550